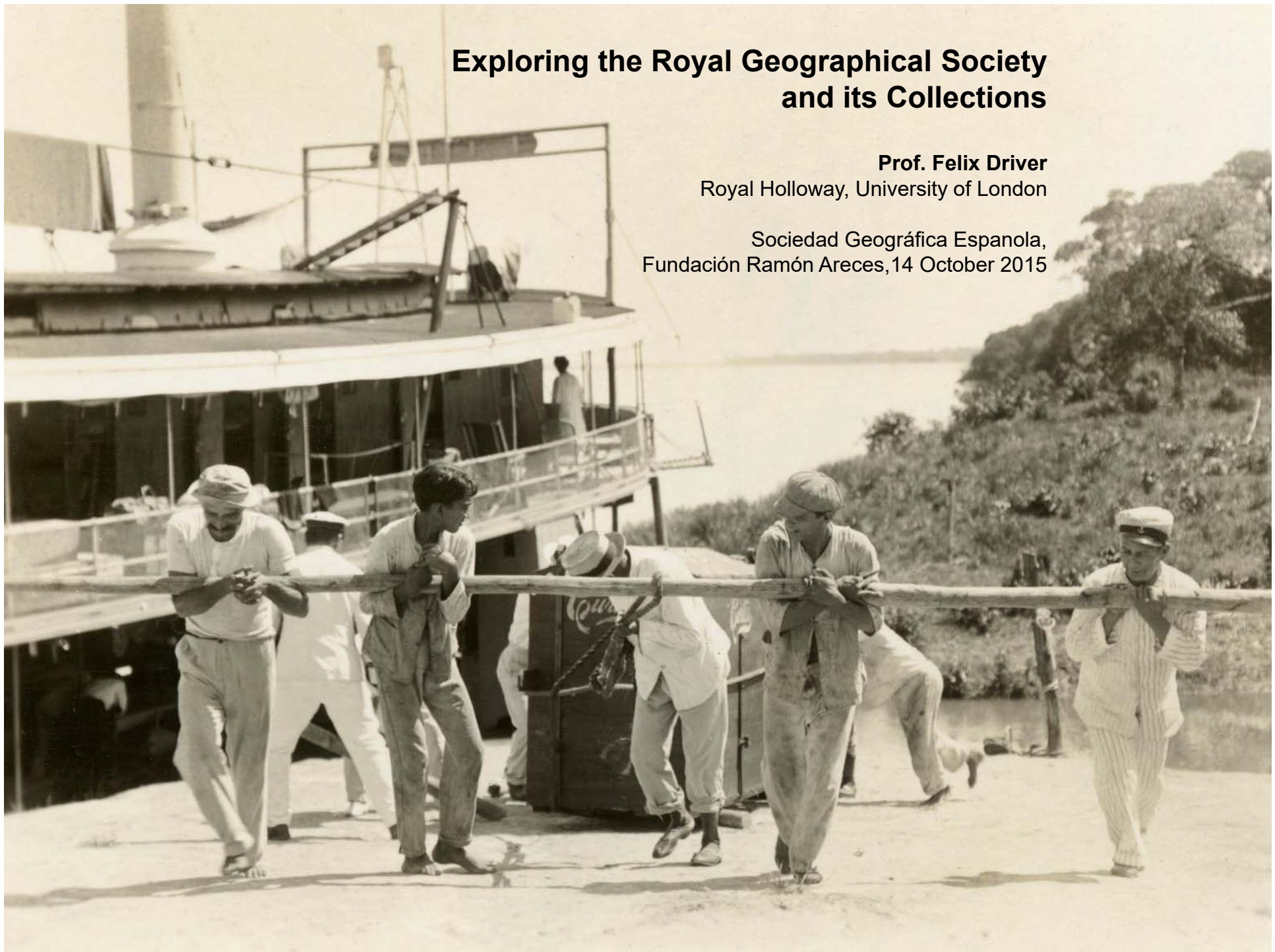


Exploring the Royal Geographical Society and its Collections

Prof. Felix Driver
Royal Holloway, University of London

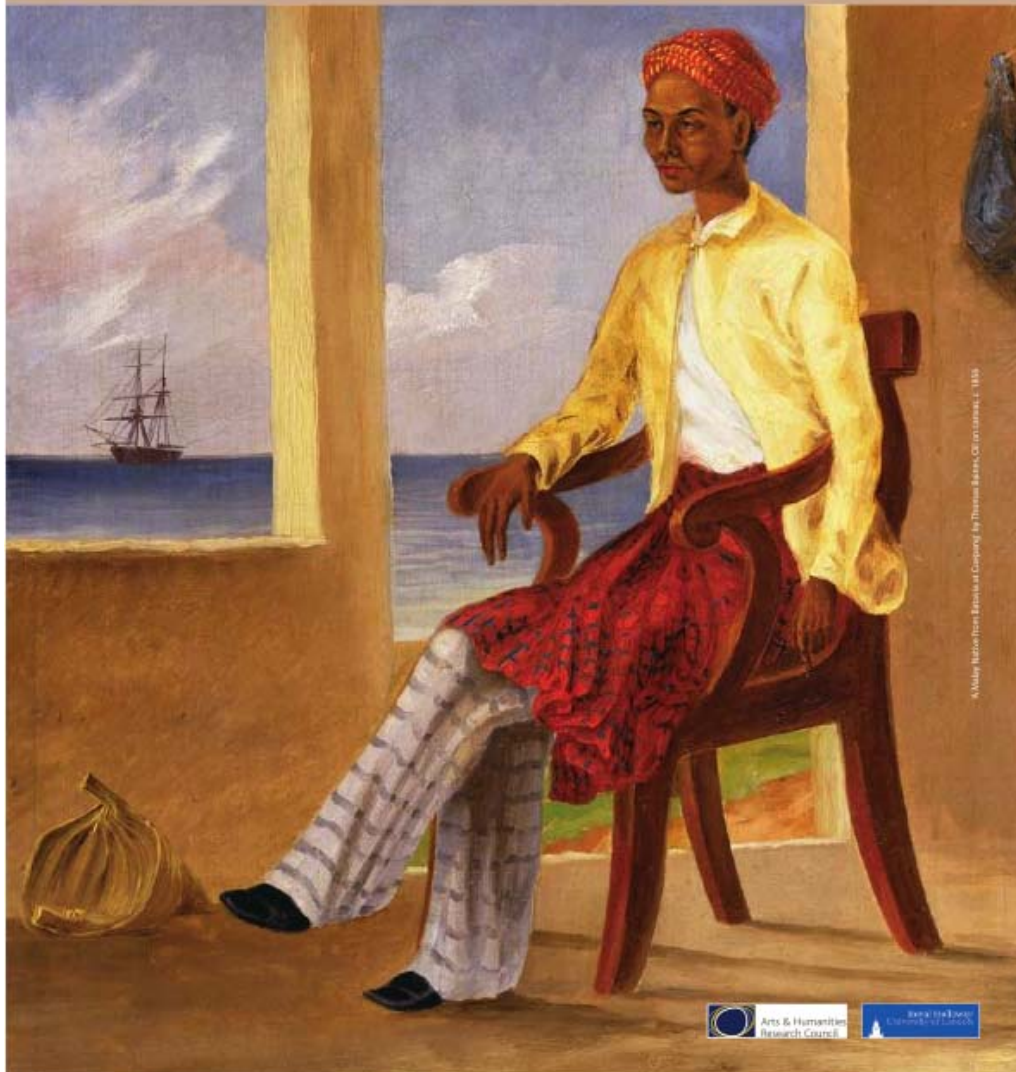
Sociedad Geográfica Española,
Fundación Ramón Areces, 14 October 2015



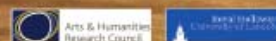
Hidden Histories of Exploration

Royal
Geographical
Society
with IBG

15 October - 10 December 2009
1 Kensington Gore, London SW7 2AR



A. M. 1855



Hidden Histories
of Exploration

Home About Exhibition Gallery Research News



Exhibition

A major new exhibition at the Royal Geographical Society (with IBG) which offers a new perspective on the Society's Collections, highlighting the role of local inhabitants and intermediaries in the history of exploration.

News

- [Travelling Exhibition](#)
- [Buy the Book](#)
- [Purchase exhibition prints](#)
- [BBC Feature Interview with Felix Driver](#)
- [The Exhibition](#)

Hidden Histories of Exploration reveals the contribution of people such as Juan Tapan, Mohammed Jan Jaman, Sidi Mahamad Barmah, Hans Driegh and Pedro Carabozo to the history of exploration. Find out about their role and its lasting significance, as illustrated in the paintings, books, maps, photographs, artefacts and manuscripts of the Royal Geographical Society (with IBG).

Materials from Africa, Asia, the Arctic and the Americas are represented with highlights including paintings by Thomas Baines, Catherine Frere's sketches of women on an African expedition, and film from the 1922 Everest expedition.

[Sitemap](#) / [Terms of use](#) / [Accessibility](#)

In collaboration with

Supported by





© RGS-IBG

**Royal
Geographical
Society**
with IBG

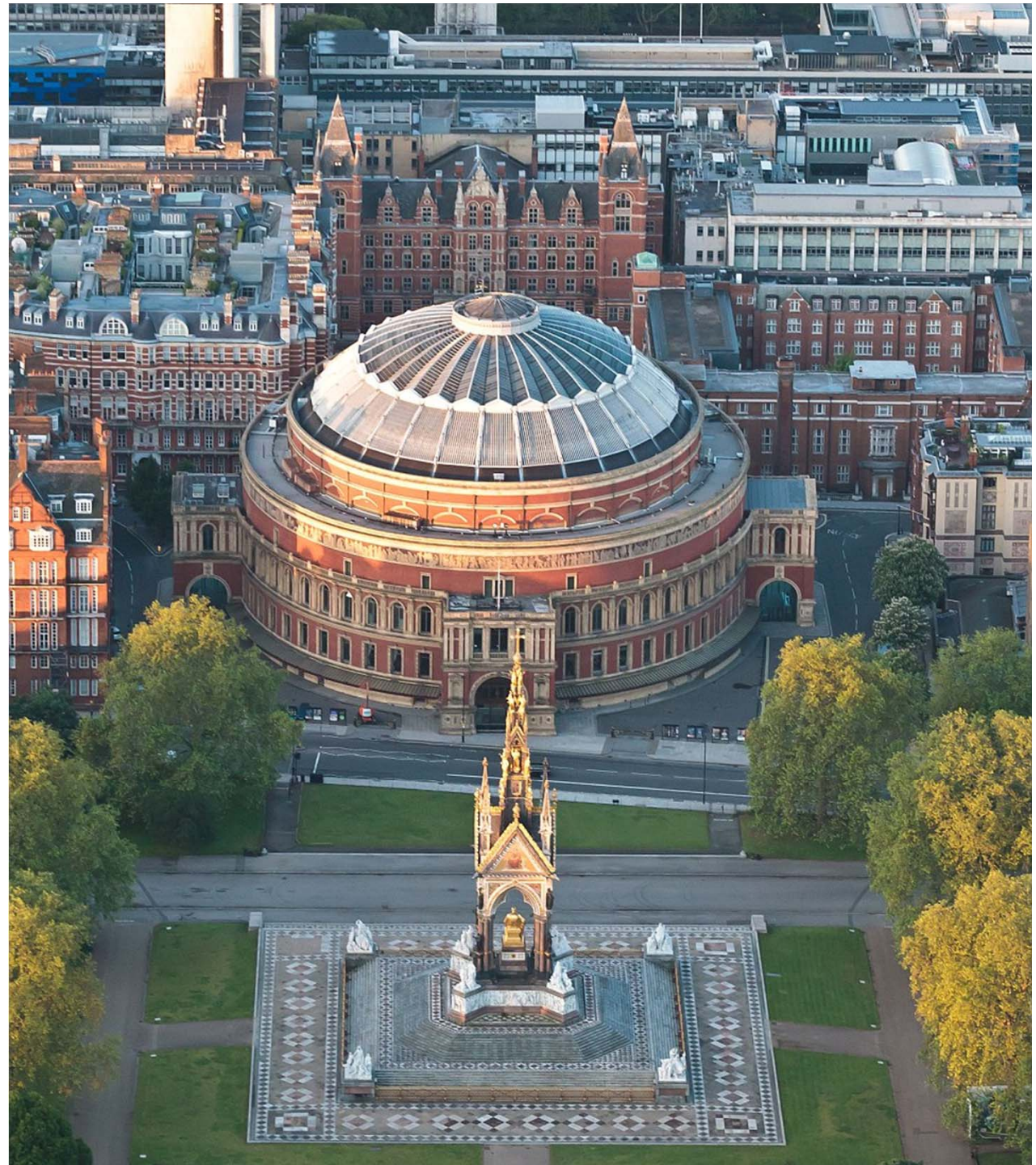
Advancing geography
and geographical learning

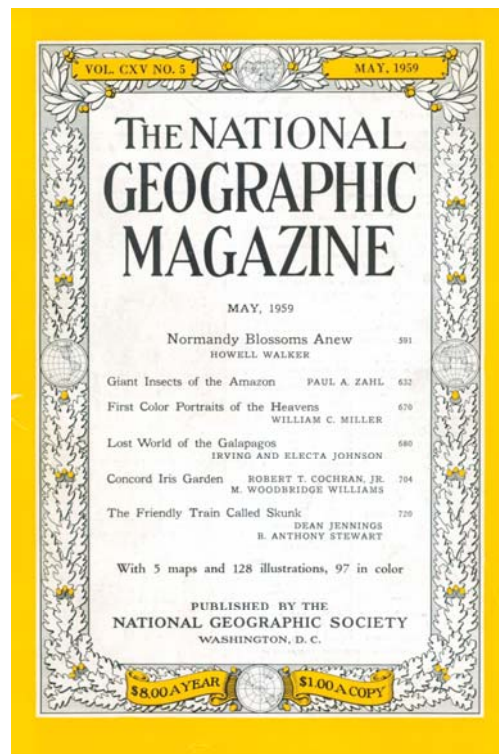
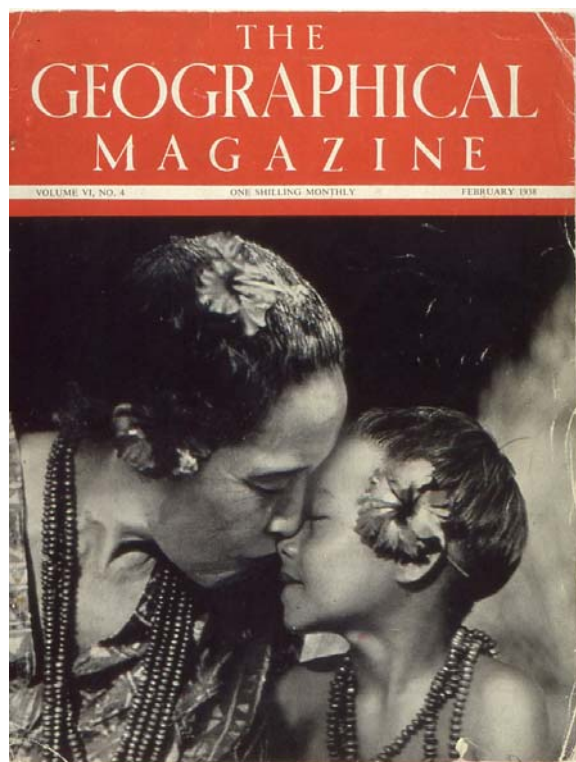


Royal Geographical Society

with IBG

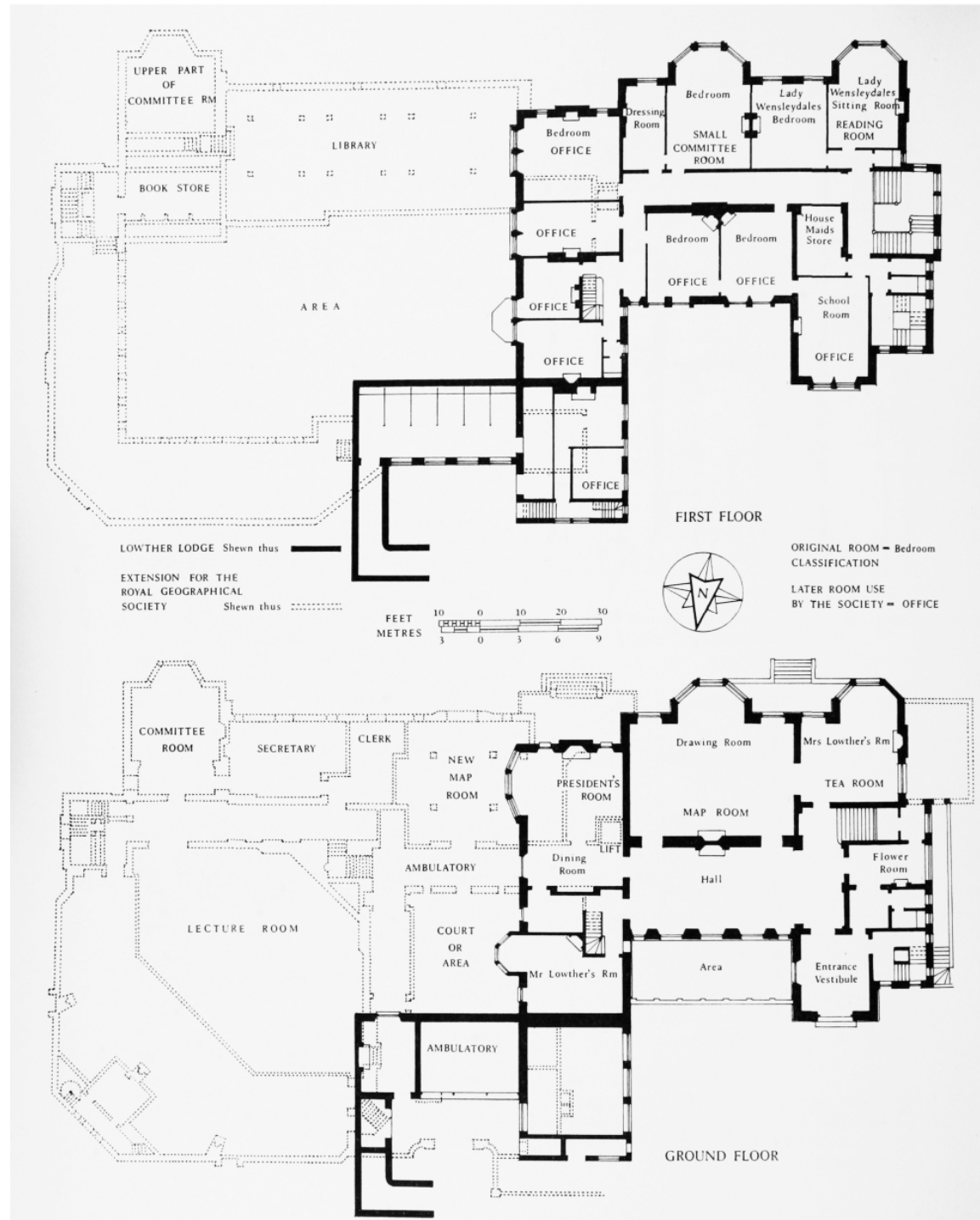
Advancing geography
and geographical learning







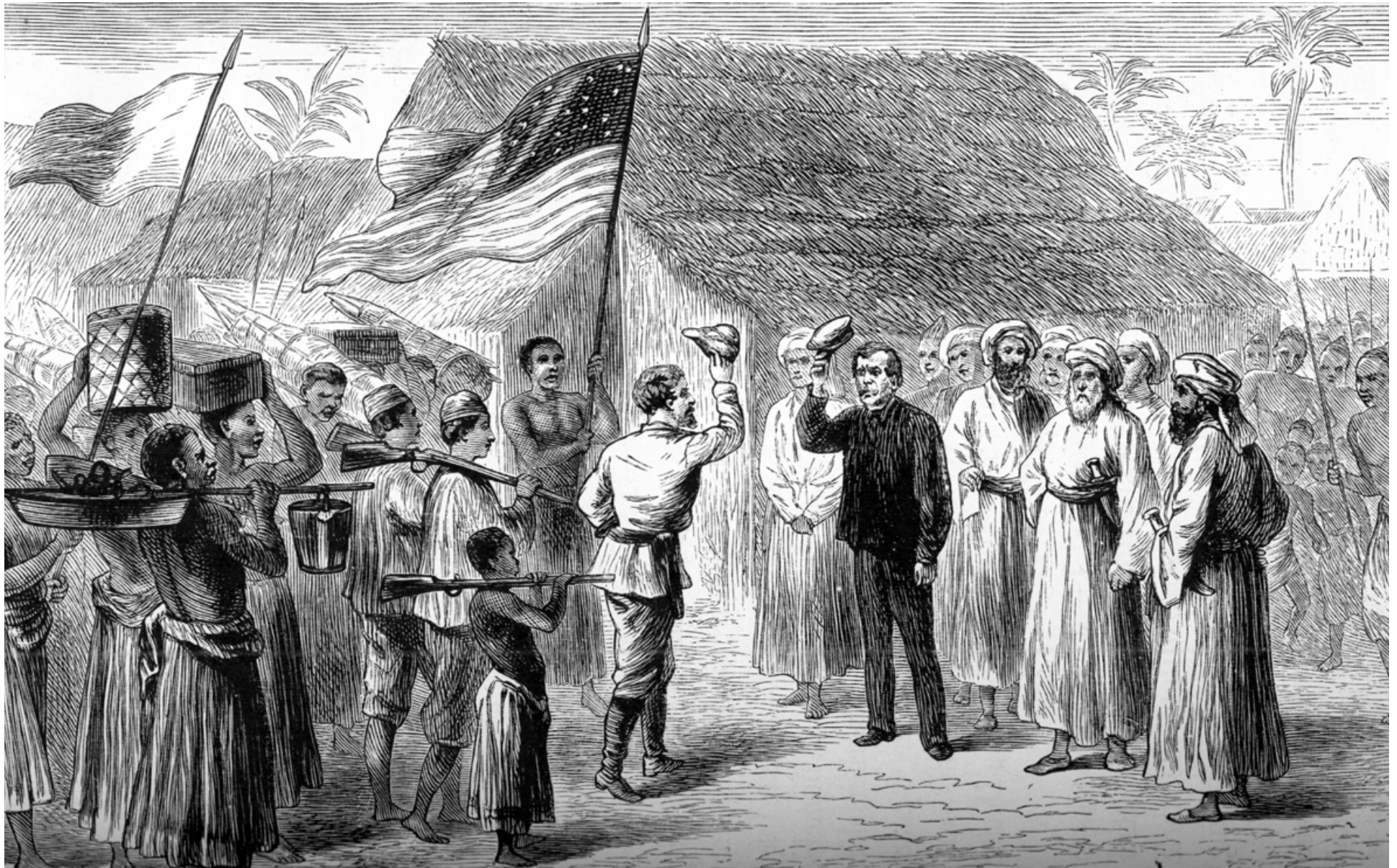
RGS Extension, 1930: Lecture Theatre & Library



Royal Geographical Society
Ondaatje Lecture Theatre



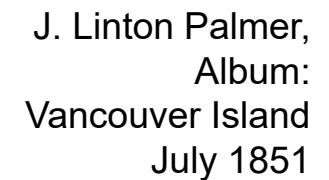




Dr Livingstone, I presume?
H. M. Stanley, *How I Found Livingstone* (1872)



A black and white portrait of a man in a military uniform, wearing a peaked cap and a high-collared jacket with epaulettes. The drawing is signed 'J.P.' in the top left corner. Below the portrait, the text 'King George VI' and 'Plaza' is written in cursive.





Royal Geographical Society museum, c.1920





'Captain Noel and kinematograph camera with large telephoto lens established on the Chang La [North Col] at 23,000 feet', 1922

18/11/98

Committee assembled to consider compensation to be given to the dependents of the men killed on the Everest Expedition

Thankay Sherpa Gratuity of Rs250/0/0 paid to Myngma Sherpa on behalf of Mother, Lhayki Sherpani, living at Chowri Kharka, No 3, Nepal

Sangay Sherpa Heir, Choktuk Sherpa Rs250/0/0 to be paid in quarterly instalments, to commence from August 15th 1922

Temba Sherpa Gratuity of Rs250/0/0 paid to Pemba Sherpa on behalf of Mother, Tempazun, living at Rebu, district Shekhar Dzong, Tibet

Lhakpa Sherpa Heir Phare Sherpa, living in Darjeeling Gratuity of Rs250/0/0 to be paid in quarterly instalments, commencing from 15th August 1922

Pasang Namgya Sherpa Gratuity of Rs250/0/0 and Rs50/0/ for each of two children, to be paid in ~~quarterly~~ monthly instalments, commencing from August 15th 1922 Monthly instalments of Rs15 each.

Norbu Rhotia Gratuity of Rs250/0/0 and Rs50/0/0 for one child to be paid in monthly instalments of Rs15 commencing from 15th August 1922

Pema Sherpa Heir, ~~Butkervangyvshepa, living in~~ Gratuity of Rs250/0/0 paid to Lhagyay Sherpa on behalf of Father, Palden Sherpa, living at Lambagar, No 2 Nepal

In case of the death of the recipients of the above pensions the R.O. for Gurkhas, Ghoom, The Deputy Commissioner and the Supt. Police, Darjeeling will decide to whom and how the balance of the pension is to be paid.
The pensions will be inalienable

1900 rupees
about 1/230

Donovan
By Commissioner,
Darjeeling.

11/8/22. *Admission Slip*
Sub. by Lhakpa
11/8/22
15th Nov 11/22

Phase - 4

Pera Khay chula
to be paid Rs 5/- monthly

1/6/22 Received for the month May 5/-

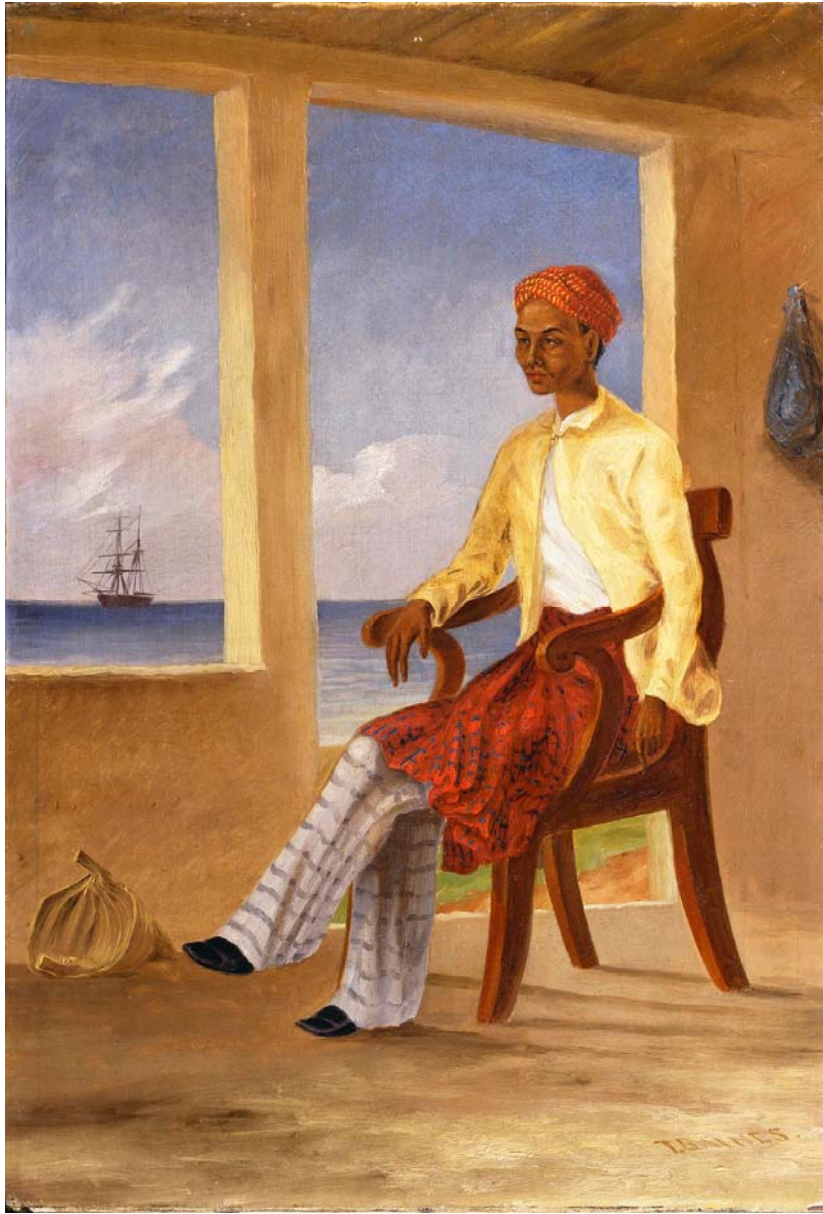
1/7/22 Received for month June 5/-

Received with making & discharged
according to schedule Receipt

R 10/-



Catherine Frere, Sketch of H M Stanley's expedition party, 1877



'A Malay Native from Batavia at Coepang'



'Moehamad Jen Jamain. His own signature'



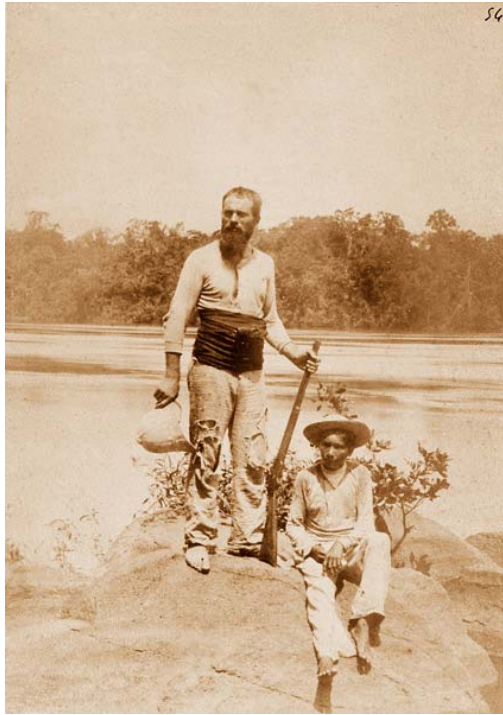
'Pandit' Nain Singh
RGS gold medallist, 1876



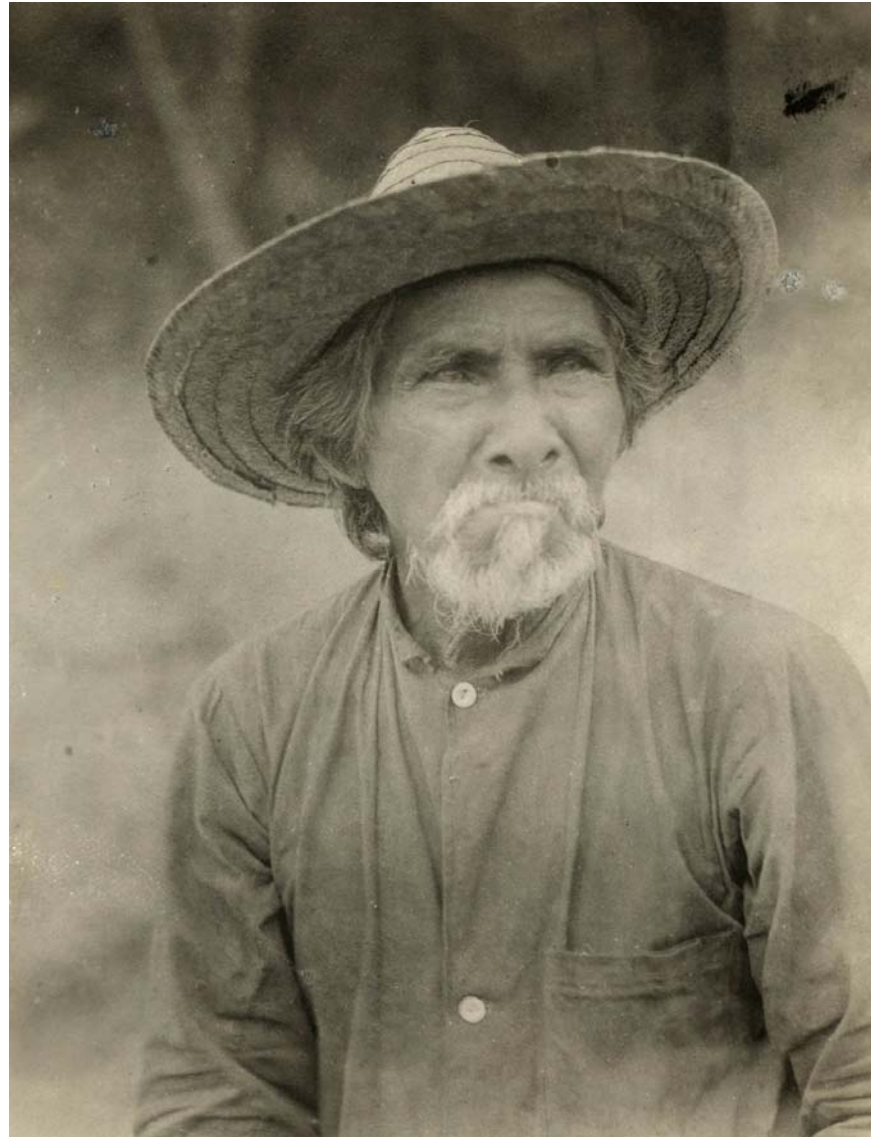
Karma Paul (Palden), interpreter on British expeditions to Everest,
1922-1938 (Planters Club, Darjeeling, 1936)



Clip from: *Climbing Mt Everest* (John B. L. Noel, 1922)



Jean Chaffanjon, with assistant
on the Orinoco
1886



Pedro Caripoco, guide to Alexander Hamilton Rice
1919-20



on Stone by J. Brandard, from the Original Drawing by Captain Ross.

Ikmalick & Apelagliu, 'Inuit hydrographers',
John Ross, *Narrative of a second voyage in search of a North West Passage* (1835)

Mount Everest Expedition 1953



**‘All the way up and down we helped, and were helped, by each other
– and that was the way it should be. But we were not leader and led.
We were partners’.**

Tenzing Norgay (1955)



019436



9A-28

019410



9A-2

019411



9A-3

019412



9A-4

019413



9A-5

019414



9A-6

J.M.L. GAVIN.

019418



9A-10

019419



9A-11

019420



9A-12

019421



9A-13

019422



9A-14

019426



9A-18

019427



9A-19

019428



9A-20

019429



9A-21

019430



9A-22

019431



9A-23

019432



9A-24

019432



9A-24

9437



9A-28

019438



9A-29

019439



9A-30

019440



9A-31

019441



9A-32

019442



9B-34

019443



9B-35



9B-36



9B-37



9B-38

019447



9B-39

019448



9B-40

019449



9B-41

019450



9B-42

019451



9B-43

019452



9B-44

019453



9B-45

019454



9B-46

019455



9B-47

019456



9B-48

019457



9B-49

019458



9B-50

019459



9B-51

019460



9B-52

019461



9B-53

019462



9B-54

019463



9B-55

019464



9B-56

019465



9B-57

019466



9B-58

019467



9B-59

019468



9B-60

019469



9B-61

019470



9B-62

019471



9B-63

019472



9B-64

019473



9B-65

019474



9B-66

019475



9B-67

019476



9B-68

019477



9B-69

019478



9C-70

019479



9C-71

The End

